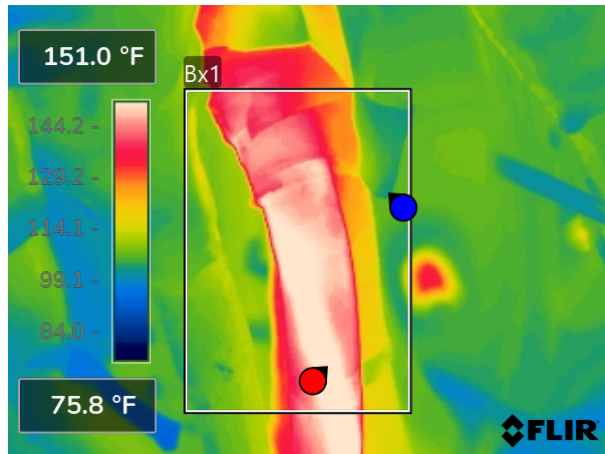


## Thermographic Exception Report

Area/Item I.D.	CC196/Engine Room #4
Description	Junction Box Recip 2
Severity Assesment	Level-4 Critical
Detail	One of motor wiring insulation severally damaged and exposed bare wires.
Action Recommended	Schedule motor repair.



Measurements	
<b>Bx1</b>	
Max	189.5 °F
Avg	126.1 °F
Min	104.6 °F